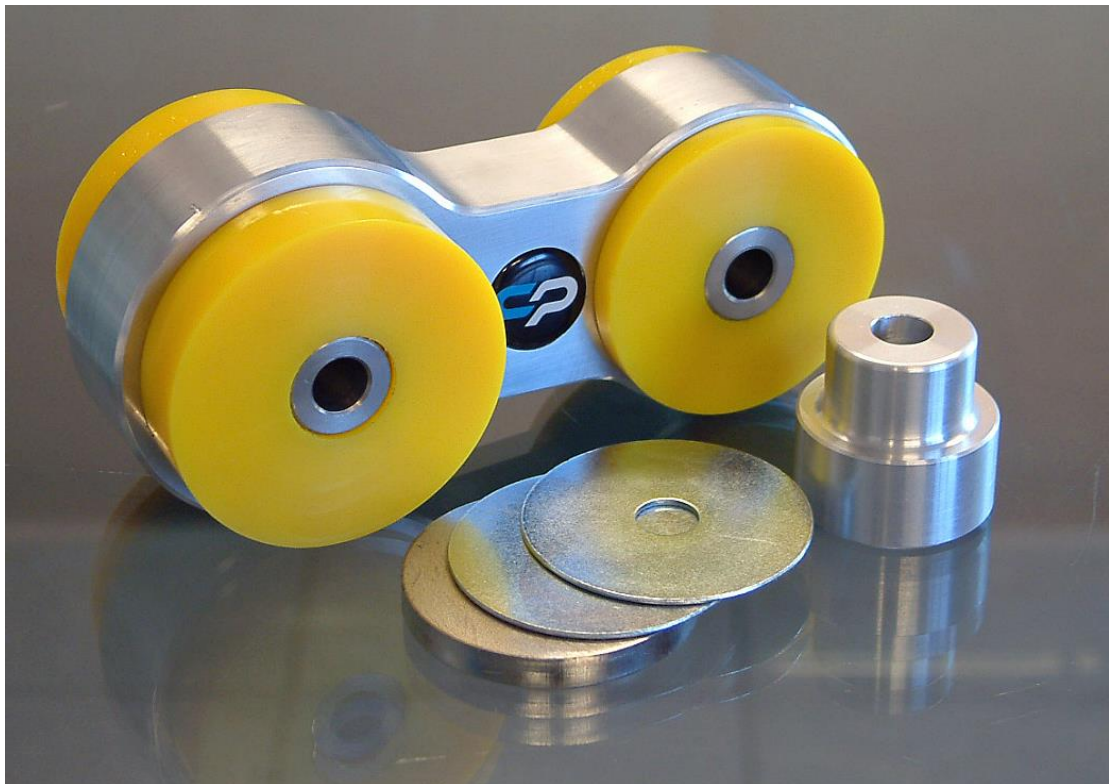


## Installation Instructions

# Engine Torque Mount Restrictor

Ford Fiesta ST150/ST180 & 1.0 Ecoboost Models



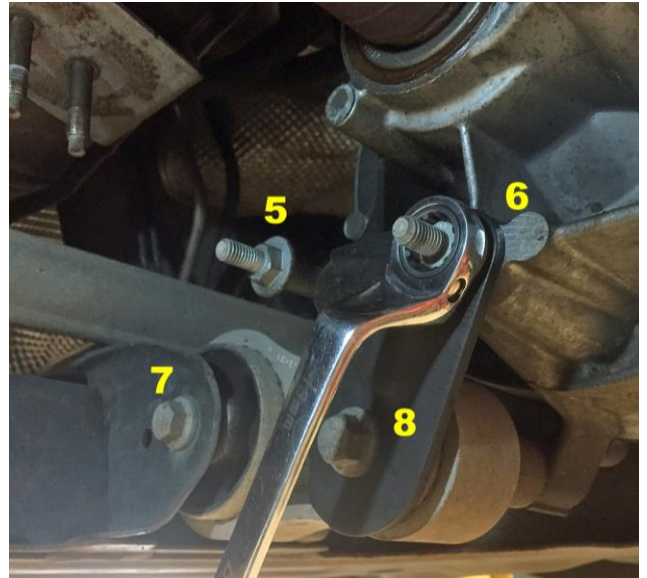
**Suitable for DIY installation**

## RECOMMENDED TOOLS

Trolley Jack & Axle Stands (or car ramp)  
13mm Socket & Ratchet  
Bench Vice  
Lever or large flat bladed screw driver  
Torque wrench

## REMOVAL

1. Place car on ramp or jack up car and support using axle stands
2. Remove the 4 x 13mm nuts (no 1,2,3,4) retaining the exhaust cat support bracket and remove bracket (retain parts for reinstall later)



3. Remove the 4 x 13mm bolts (5,6,7 & 8) retaining the original torque mount (retain parts for reinstall later)
4. Place original mount into a vice and using a suitable lever or screwdriver prise the original support bracket off the original mount – retain the bracket for later use – dispose of the original mount



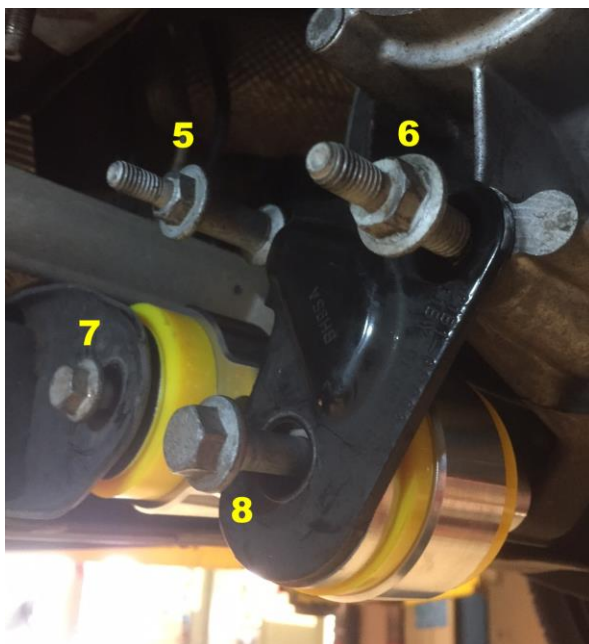


## INSTALLATION

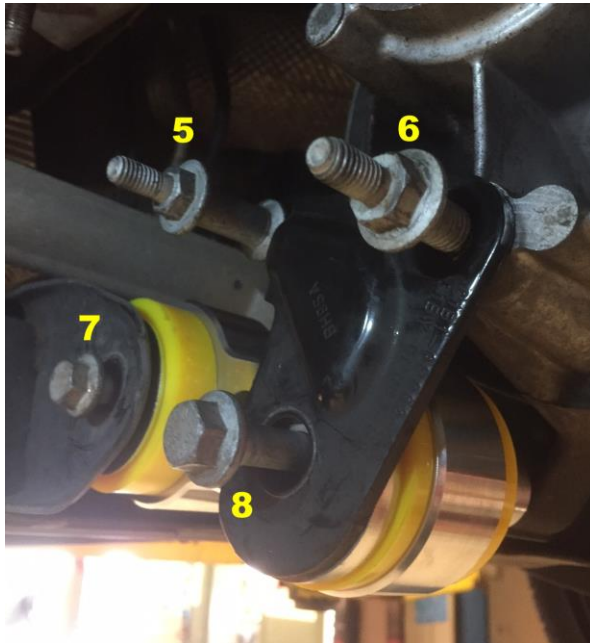
5. Install the CP Torque mount to the subframe using the original 13mm bolt and 2 x thin washers supplied



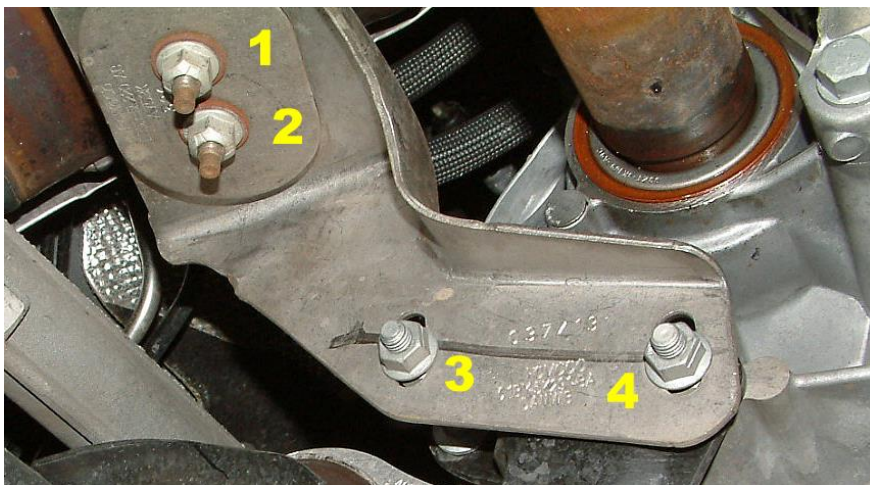
6. Install the remaining 3 x 13mm gearbox bolts (no 5,6 & 8) and support bracket – please ensure the correct sequence is used of bolt, support bracket, thick washer, torque mount and then spacer and pictured below



7. Using a torque wrench tighten bolts No:5,6,7 & 8 to 48nm/34 lb-ft.



8. Re install the exhaust support bracket and 4 x 13mm retaining nuts No 1,2,3 & 4



If you experience problems please call our customer service line at **01260 279604** for assistance.



Collins Performance  
Engineering Ltd  
Tel 01260 279604  
Fax 01260 299208  
Tel: M 07725 618 835

E-mail: [gary@collinsperformance.com](mailto:gary@collinsperformance.com)

Managing Director: Martin Collins

VAT No: 634 1678 35