

Windows 8 64-bit Systems Driver Install

Installing iflash drivers using Windows 8 64-bit systems

- 1) Uninstall the iflash software (If it has already been installed)
- 2) follow the steps on this webpage to disable Driver Signature Enforcement

Installing Hardware with Unsigned Drivers in Windows 8/10

To protect the average user, [Windows 8](#) requires all hardware drivers have a digital signature before you can install them, making it more difficult to install malicious drivers.

Hardware drivers have low-level kernel access, so malicious or just badly programmed drivers could cause crashes and open gaping security holes. However, some hardware drivers without digital signatures — particularly older ones — may work perfectly fine on [Windows 8](#). Or, you may be an enterprising developer coding your own drivers and may want to install them on your system for development purposes. Let me show you how you can install drivers without a digital signature.

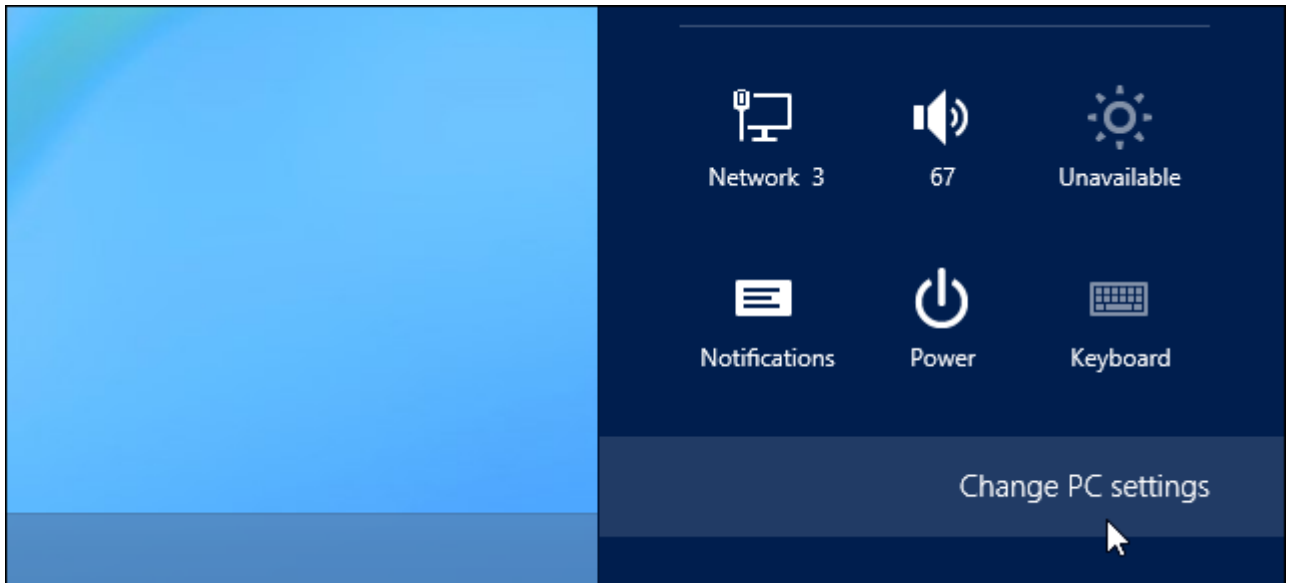
Reboot Into Advanced Startup Options

Before beginning this process, be sure to save all your work in any open programs. Your computer will reboot during this process.

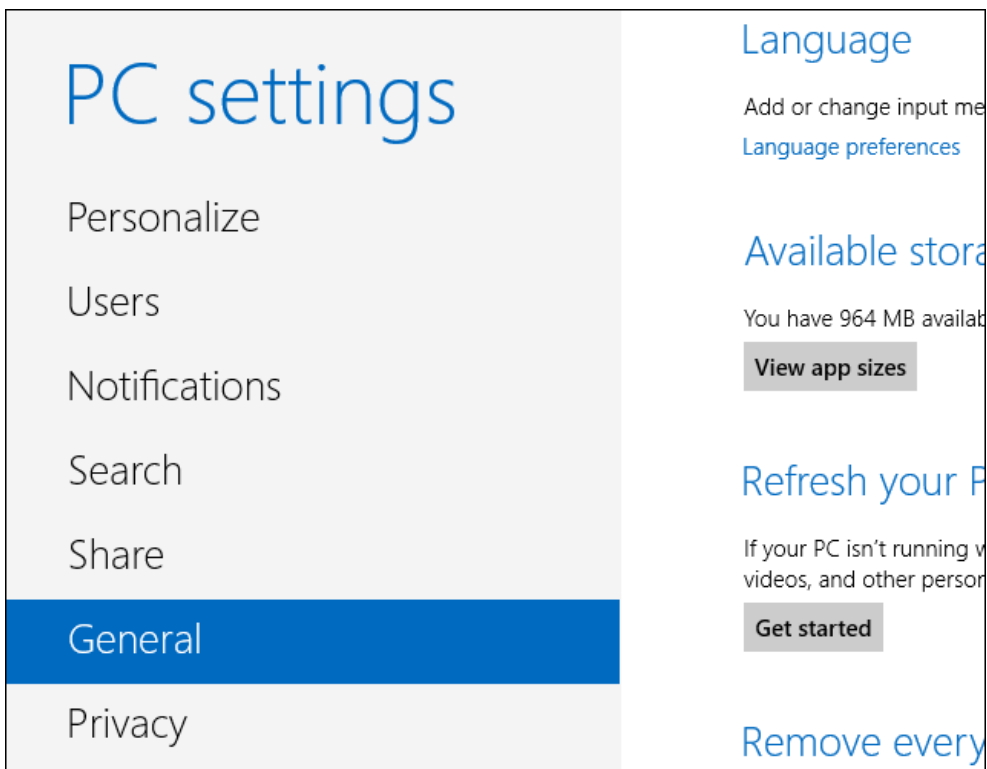
First, open the Settings charm. You can do this by moving your mouse to the bottom-right corner of your screen and clicking Settings. If you're using a touch-enabled PC, swipe in from the right and tap Settings. Press Windows Key + I to open the Settings charm directly with a [keyboard shortcut](#).



Select the Change PC settings option at the bottom of the Settings charm.



In the PC settings app, select the General category.



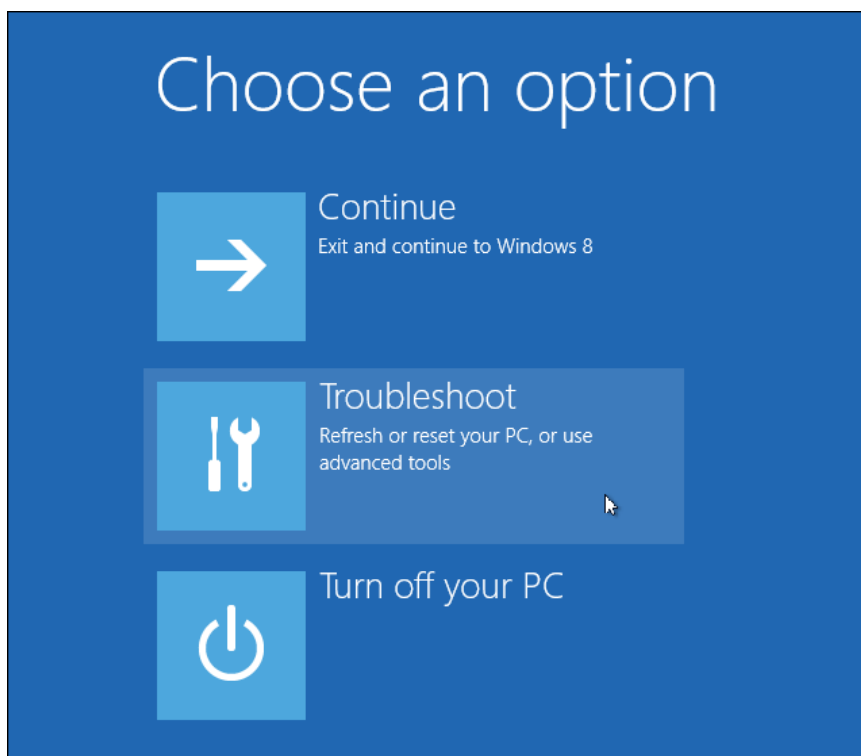
Scroll down and click the Restart now button under Advanced startup. Your computer will reboot.

Note that you can also hold the Shift key while tapping or clicking the Restart option on the Settings charm to immediately reboot your computer and bring up the advanced startup options. You could also use a special command to directly reboot into this menu.

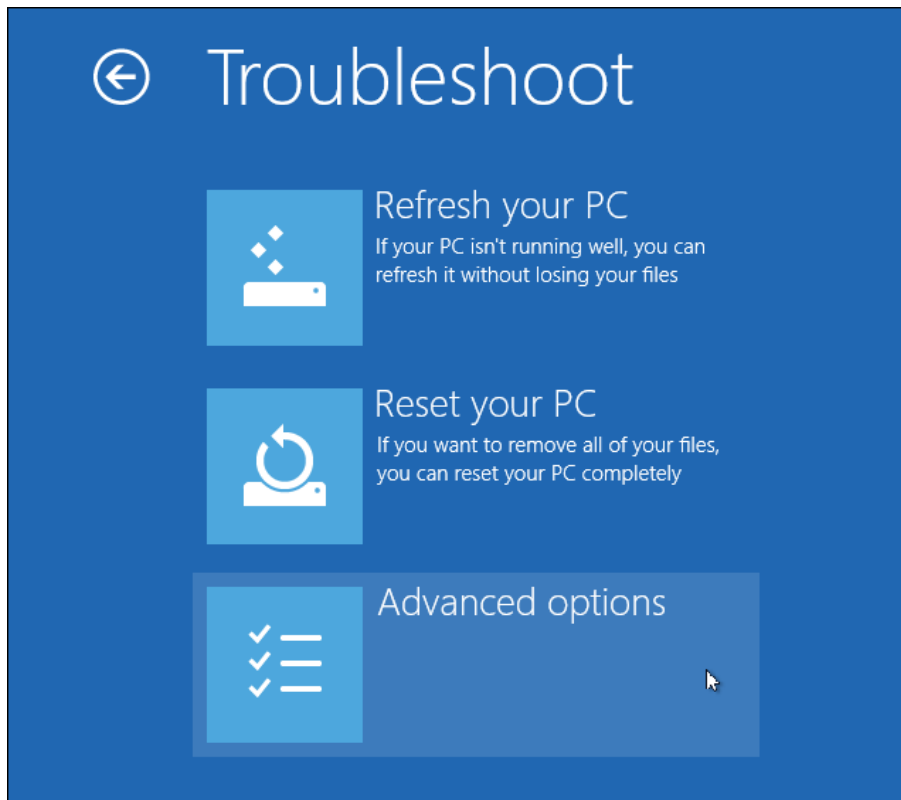


Access Startup Settings

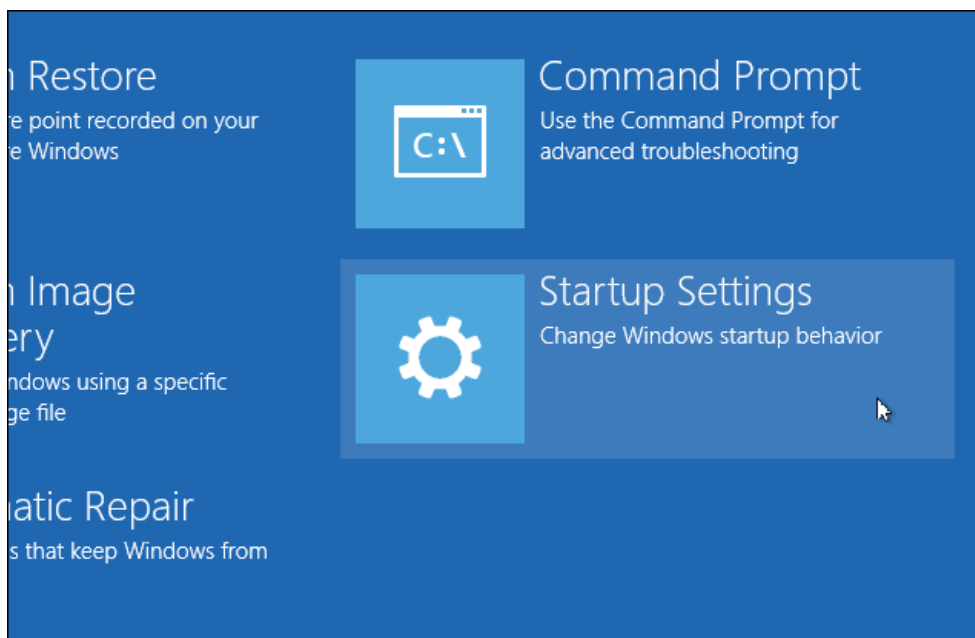
When the Choose an option screen appears, click or tap the Troubleshoot tile.



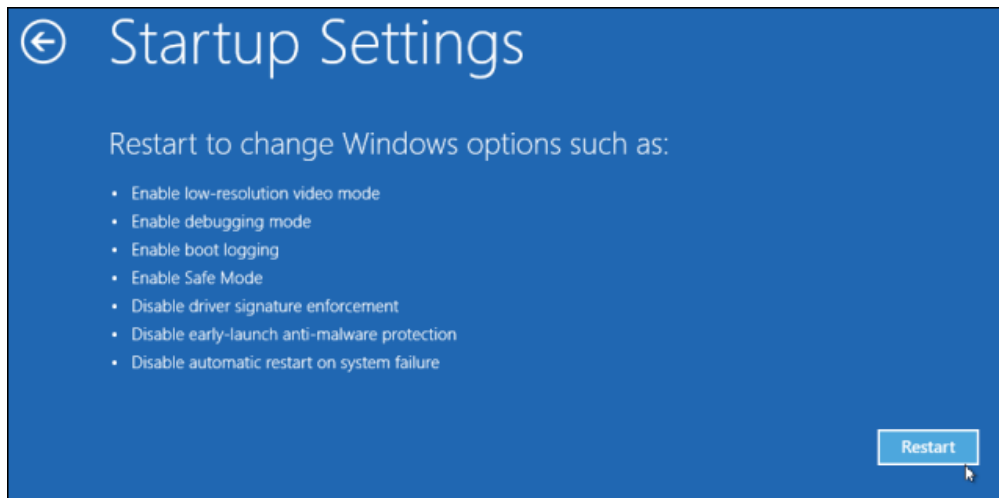
Next, click or tap the Advanced options tile.



Select the Startup Settings tile on the Advanced options screen.

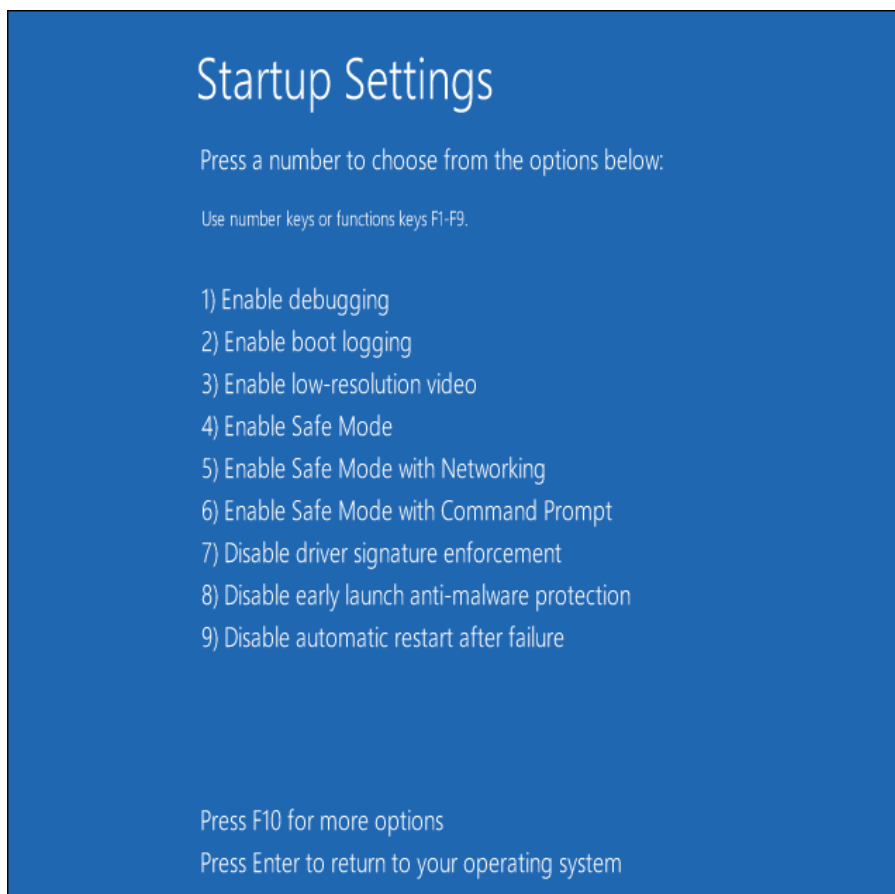


Click the Restart button on the Startup Settings screen to reboot your computer again.



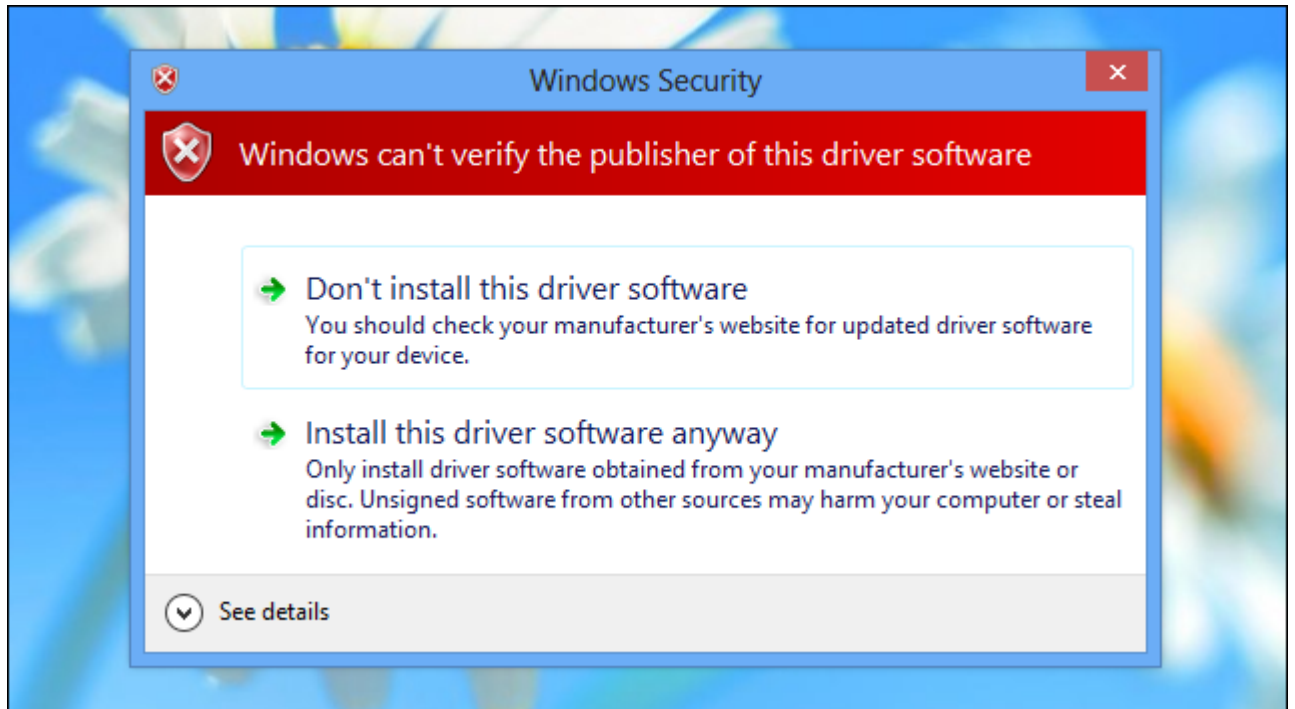
Disable Driver Signature Enforcement

On the Startup Settings screen, tap the F7 or 7 key on your keyboard to select the “Disable driver signature enforcement” option.



Windows 8 will immediately boot to its typical lock screen. Sign into Windows 8 as you normally would — everything will look the same, except Windows will no longer demand driver signatures until you next reboot.

You can now install unsigned drivers as you would on previous versions of Windows. Windows will alert you if you try to install a driver that isn't properly signed, but you'll see an "install this driver software anyway" option you can choose.



Reboot

When you're done installing the unsigned drivers, reboot your computer. Windows will keep using any unsigned drivers you've already loaded, even as it enforces signature requirements for new drivers.

- 3) This will boot you up in a state where the drivers can be installed.
- 4) Unplug the iflash cable, install the iflash software, and accept the install of unsigned driver
- 5) Plug the cable in and try the software