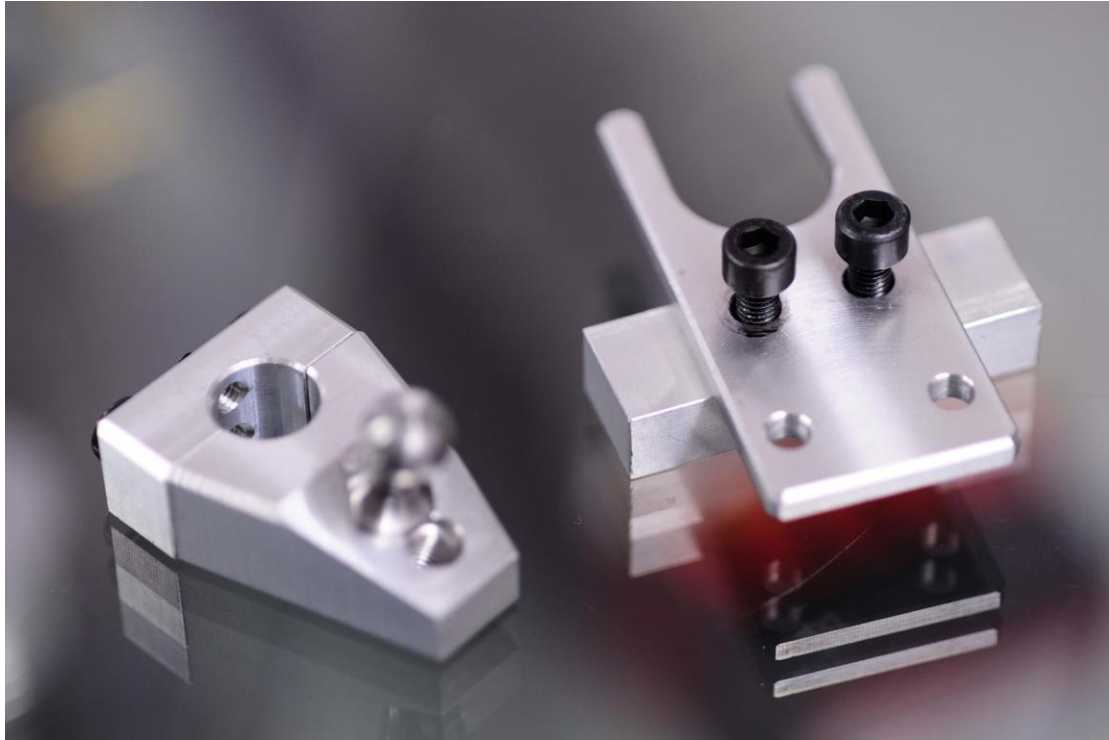


Installation Instructions

Collins Performance Quick Shift

2005-2011 Focus ST225 model

2008-2011 Focus RS model



SUGGESTED TOOLS

4mm Allen Key socket with medium Extension

2mm Allen Key

12mm Spanner

Thread lock fluid

Large flat bladed screw driver

Important Note: Thread Lock & Check Tighten Stainless Ball Joint into alloy body before installation

INSTALLATION

1. Lift up gear gator trim to gain access to linkage



2. Prise cable from lever ball joint using large screw driver



3. Lift cable from carrier



4. Install into position cable carrier extension – tighten using 4mm Allen key



5. Install ball joint relocation bracket onto gear lever rod tighten using 4mm Allen key



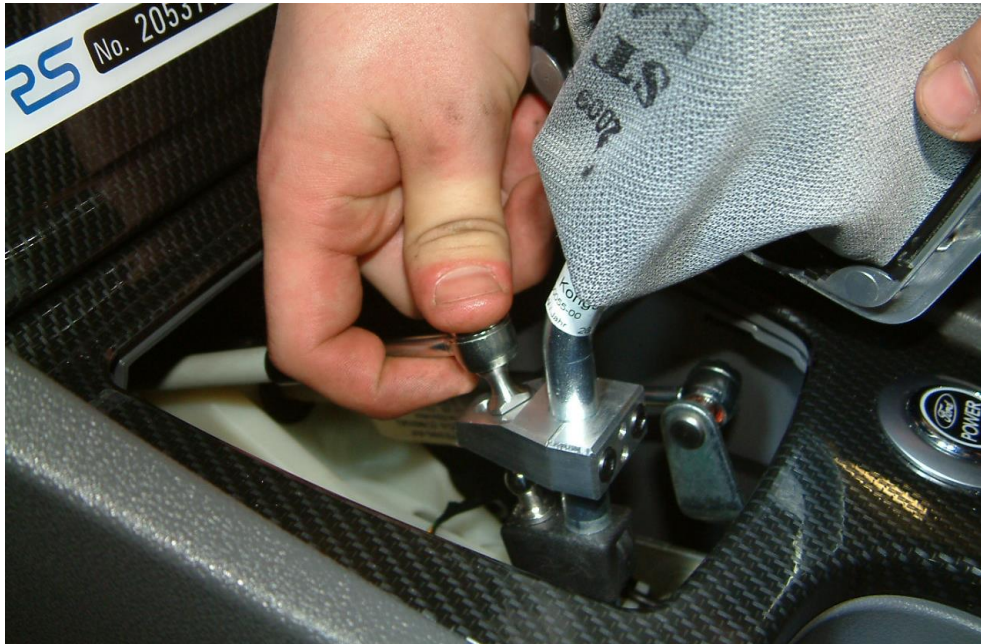
6. Tighten 2mm allen keys



7. Relocate cable into carrier extension – ensure it is located securely



8. Relocate cable onto rod ball joint



9. Reinstall gator trim



Collins Performance
Engineering Ltd
Tel 01260 279604
Fax 01260 299208
Tel: M 07725 618 835

E-mail: gary@collinsperformance.com

Managing Director: Martin Collins

VAT No: 634 1678 35