



Installation Instructions



Contents

- 1 x i-flash cable
- 1 x i-flash key

System Requirements

Laptop/portable computer, Windows XP, Vista, 7, Windows 8 32 bit (Windows 8 64 bit see section 5) and Windows 10 with a minimum of 5.0 MB disc space

Important Note – **Focus Mk3 RS/ST250/ST TDCi/Ecoboost, Fiesta Mk7/7.5 Ecoboost 1.0 & 1.6 ST**
Use sections 1,2,3 & 4

Focus Mk2 ST225/RS sections 1, 3 and 4 only

Section 1 – Installing CP i-flash firmware onto your Laptop

Section 2 – Copying ECU data from vehicle - If your device has been supplied without files

Section 3 – Installing Software onto your Vehicle

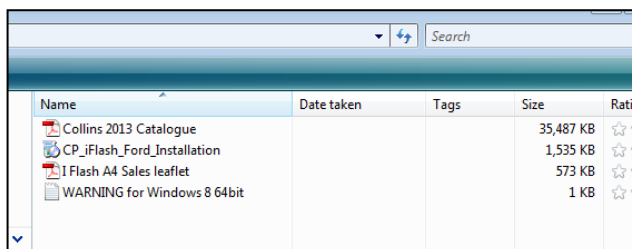
Section 4 – Reinstalling original Software onto your Vehicle

Section 5 – i-flash firmware updates/i-flash licence updates

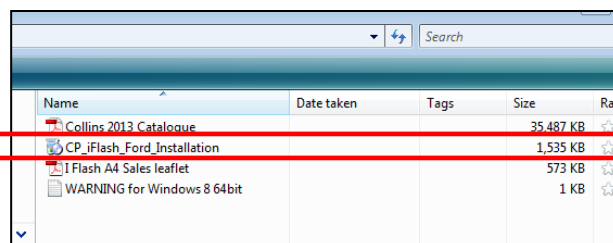
Section 6 – i-flash Windows 8 64-bit driver install

Section 1 – Installing CP i-flash firmware onto your Laptop

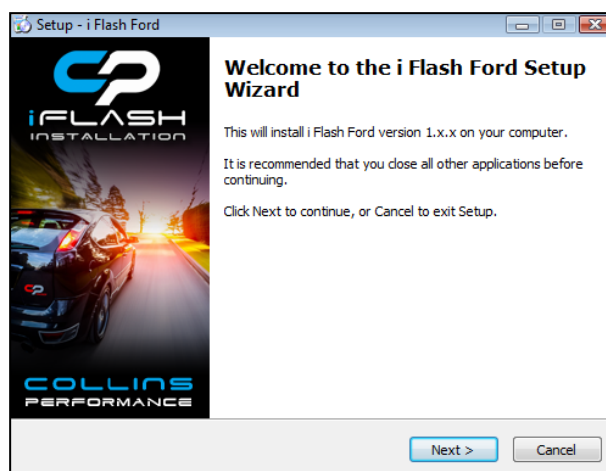
1.1 Insert the i-flash key into a USB port and copy and paste the files into a folder on your desktop



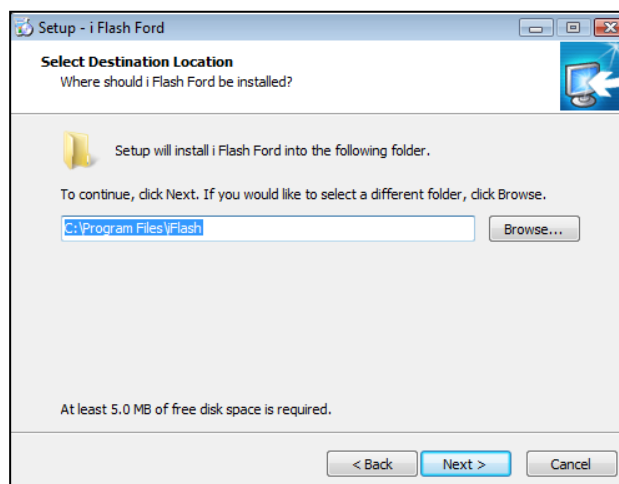
1.2 Double click on the 'CP_iFlash_Ford_Installation' file and start the install process



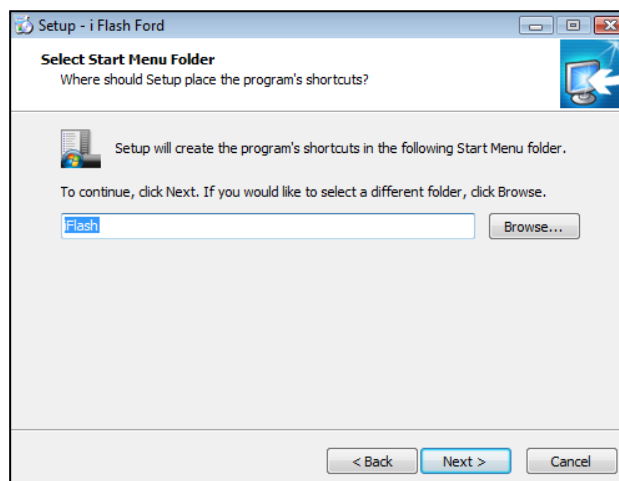
1.3 Follow the setup instructions



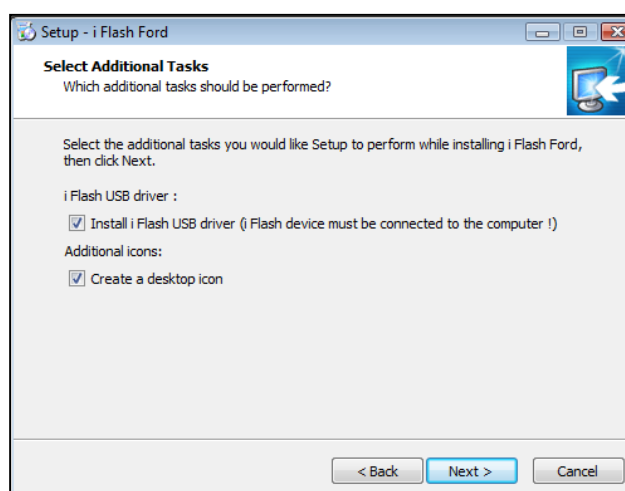
1.4 Select Destination Location



1.5 'Click' Next>



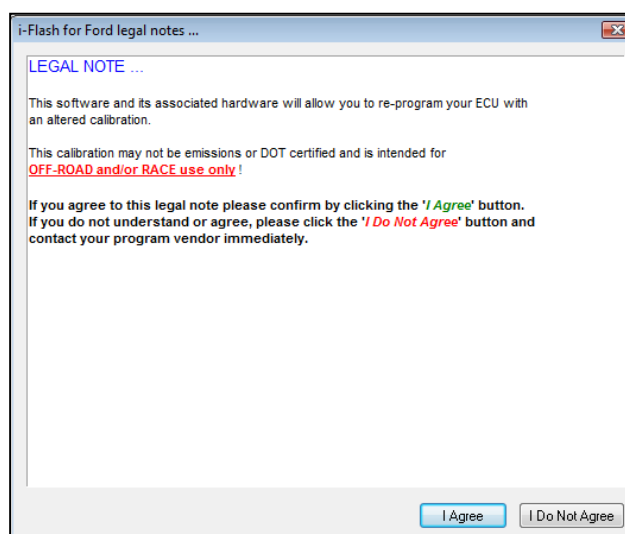
1.6 'Click' Next>



Section 2 – Copying ECU data from vehicle (If your device has been supplied without files)

2.1 Double 'click' your desktop icon and open the i-flash Ford application and read the Legal note.

To proceed click 'I Agree'



2.2 Plug your I flash cable into your laptop's USB Port and connect the OBD2 connector to your vehicle

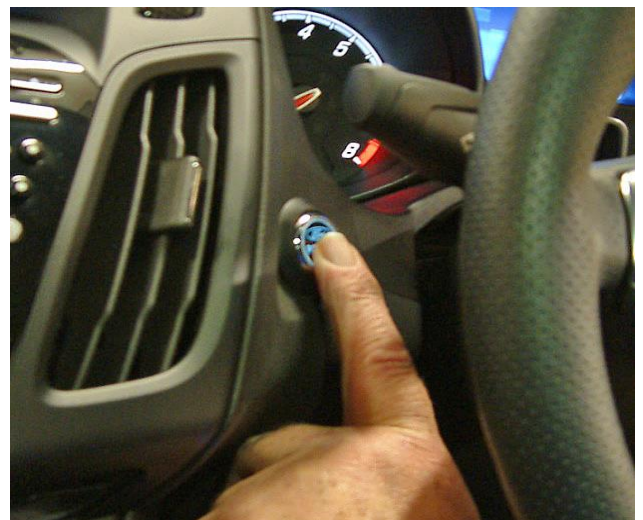
Important Note: Before proceeding further

Please ensure the vehicles battery is fully charged
(Focus Mk2 ST225 attached battery charger)

That the vehicles audio & climate system are switched off



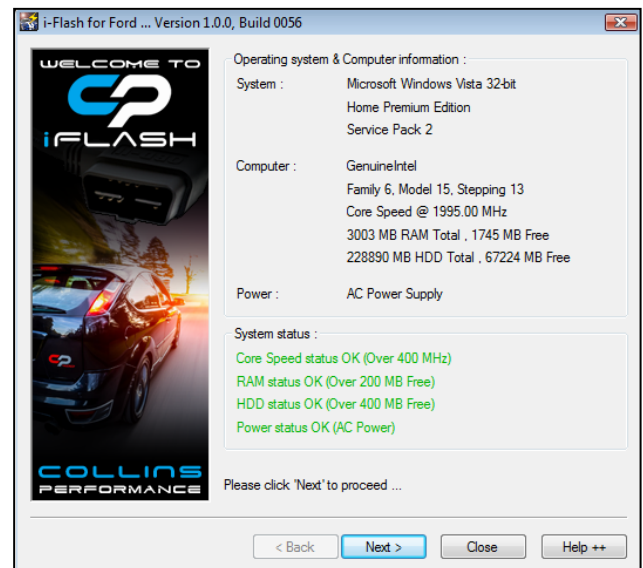
2.3 Press the ignition start button to bring on the dash warning lights – DO NOT START THE ENGINE



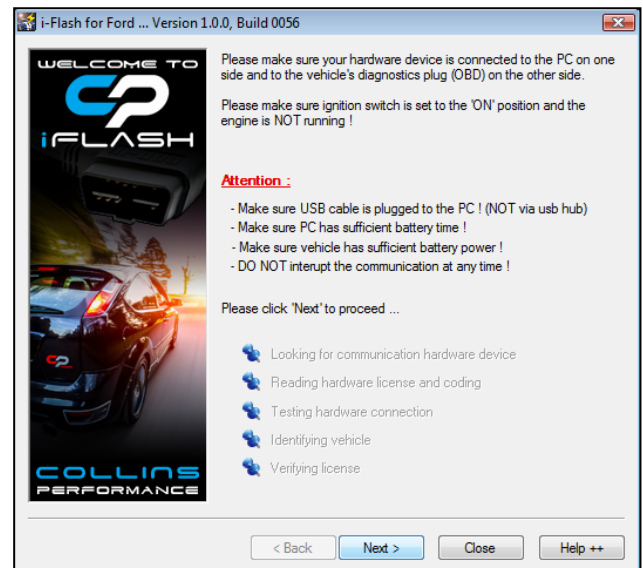
2.4 'Click' Next



2.5 'Click' Next



2.6 Please read the Attention warnings And then 'Click' Next



2.7 'Click' Next –

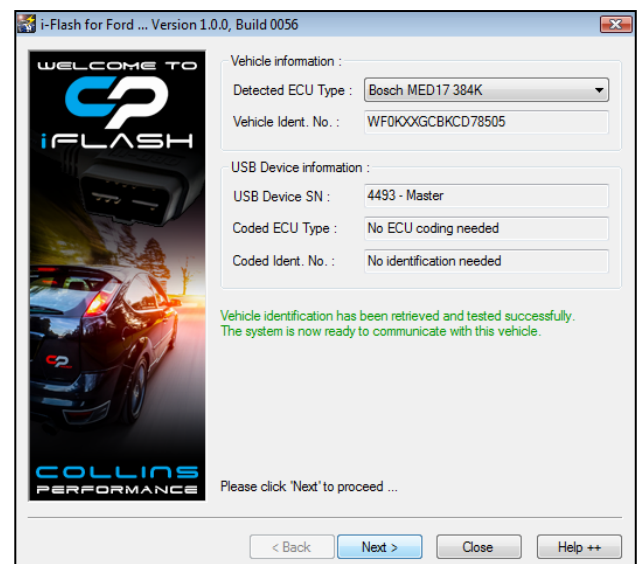
Focus ST Mk3 (2012-2016) go to section 2.14

Fiesta ST Mk7/7.5 go to section 2.14

Fiesta 1.0 Ecoboost go to section 2.14

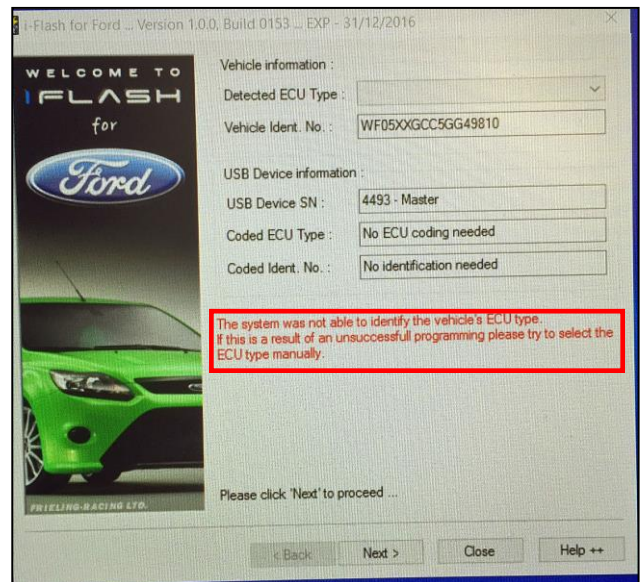
Focus RS Mk3 & ST MK 3.5 go to section 2.8

Focus ST Mk3 TDCi (2017) go to section 2.11



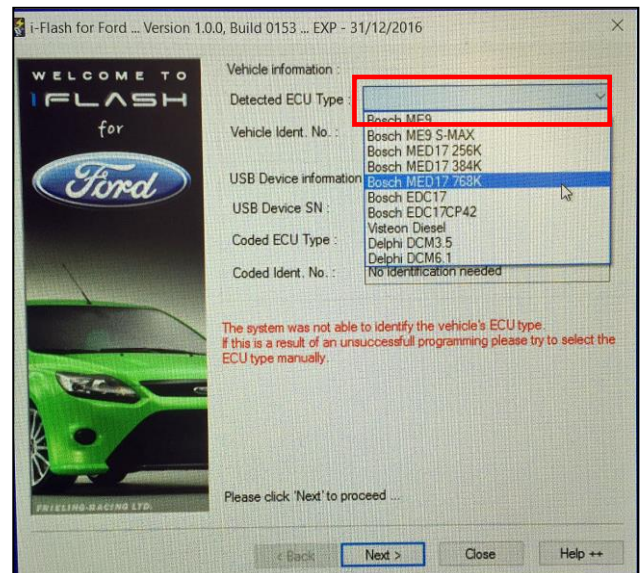
2.8 FOCUS MK3 RS & FOCUS ST250 MK3.5 (2017>)

Message“ The system was not able to identify the vehicle's ECU Type ...”

**2.9 FOCUS MK3 RS & FOCUS ST250 MK3.5 (2017>)**

'Click' blank Detected ECU type box

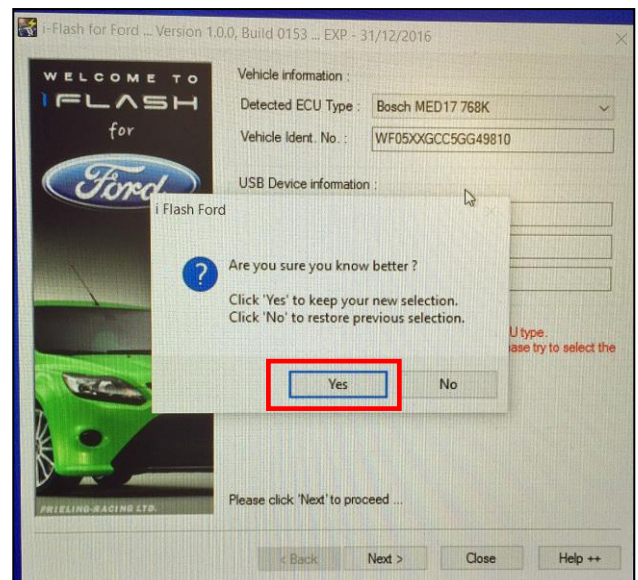
Select 'Bosch MED17 768K' from the drop down menu

**2.10 FOCUS MK3 RS & FOCUS ST250 MK3.5 (2017>)**

Message “Are sure you know better?”

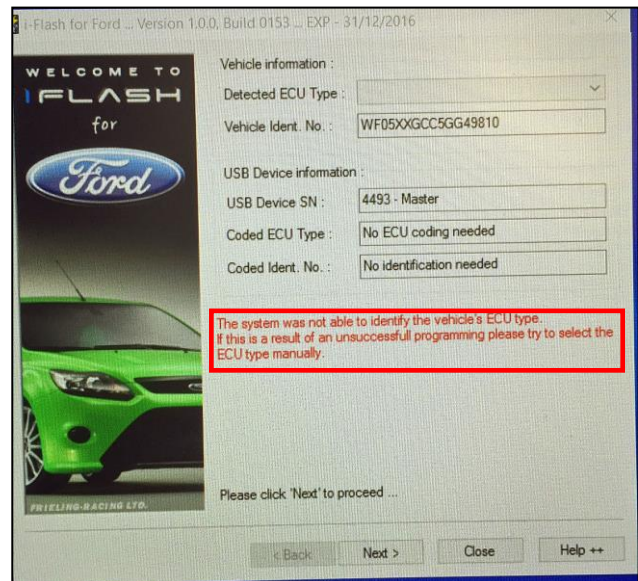
'Click' Yes

Continue to point 2.18



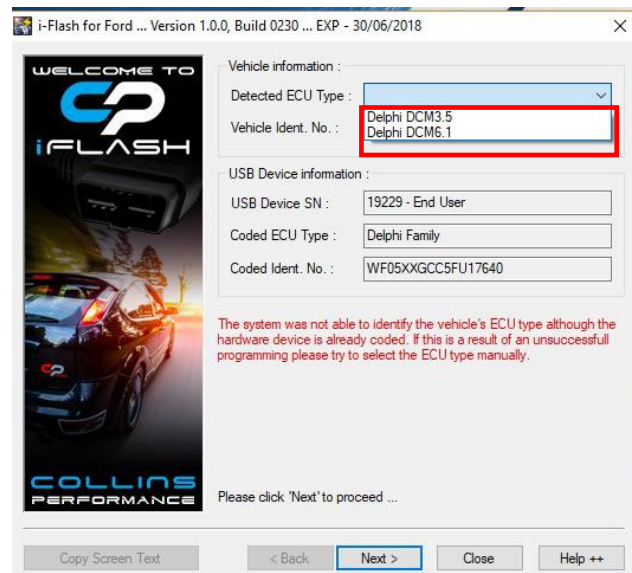
2.11 FOCUS Mk3.5 ST TDCi ONLY

Message “The system was not able to identify the vehicle’s ECU Type ...”

**2.12 FOCUS Mk3.5 ST TDCi ONLY**

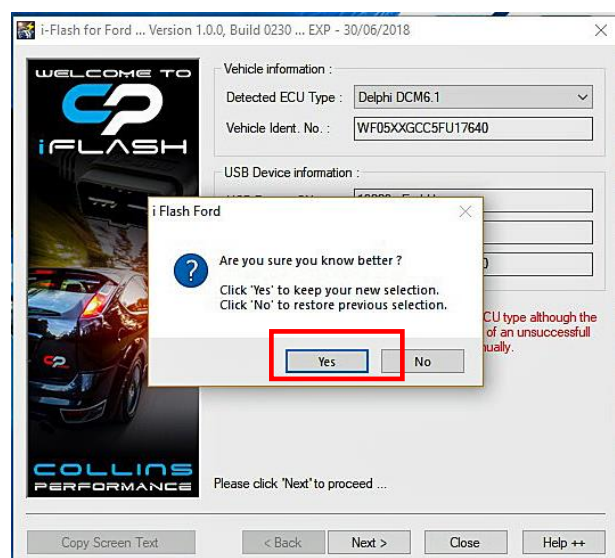
‘Click’ blank Detected ECU type box

Select ‘Delphi DCM6.1’ from the drop down menu

**2.13 FOCUS Mk3.5 ST TDCi ONLY**

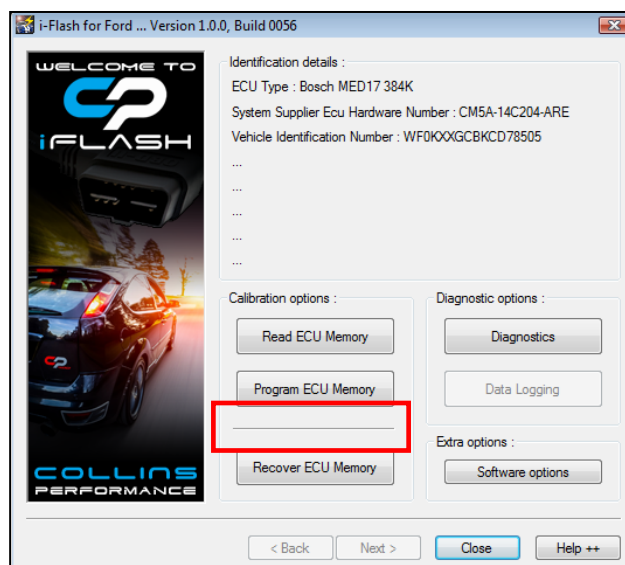
Message “Are sure you know better?”

‘Click’ Yes



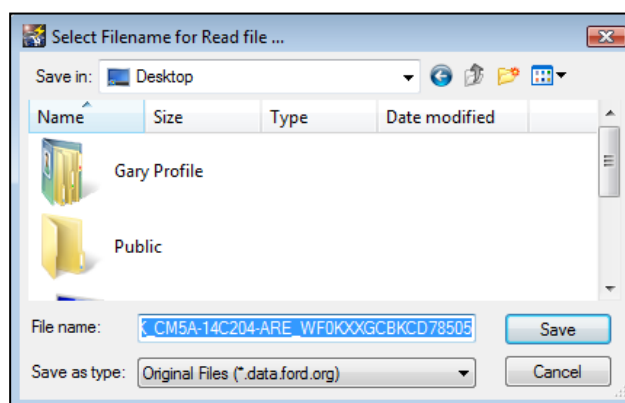
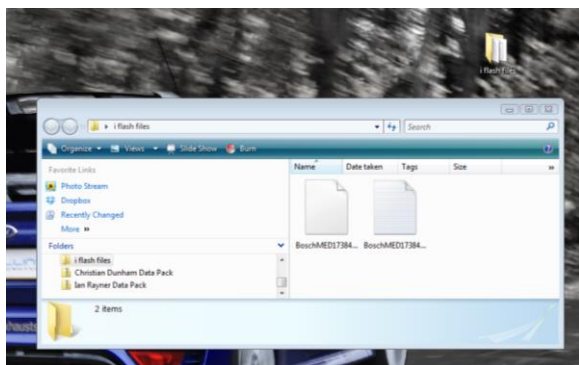
2.14 'Click' Read ECU Memory

If you get the message – Partial or Full Calibration read select 'Partial Calibration Read'



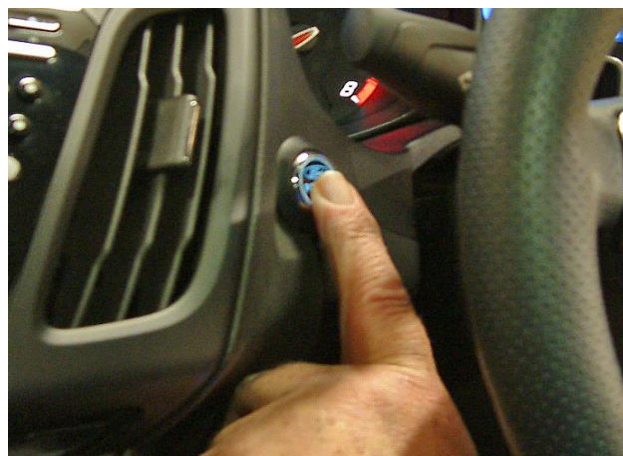
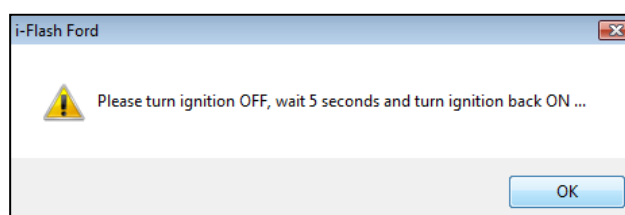
2.19 Select location where to save ECU data

We recommend that you create a i-flash folder
On your laptop In which to store your ECU
data files



2.20 Follow the on screen instructions

Note Push button start: push button several
Times until the ignition lights come on



2.18 The Software will read a copy of the vehicles Software

Note: During this process you will see warning Messages appear on the dash display such as "Engine system fault" etc



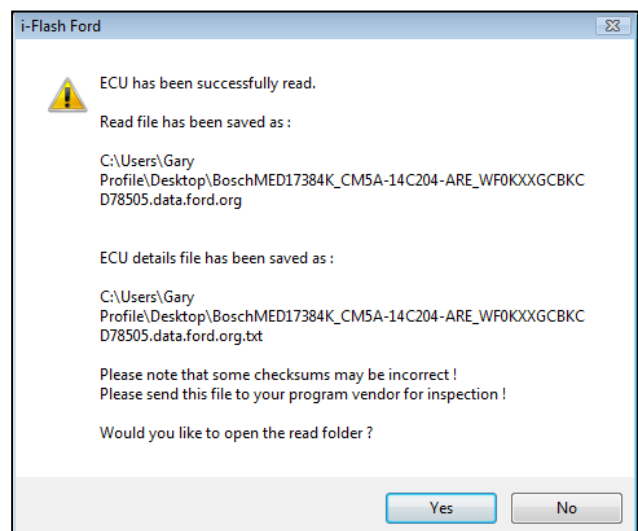
2.19 At the end of this process you will receive this Message

Please disconnect the OBD2 connector from The car

Email a copy of the copied file to the following to be processed

gary@collinsperformance.com

You can call us on 01260 279604 to confirms That we have received it

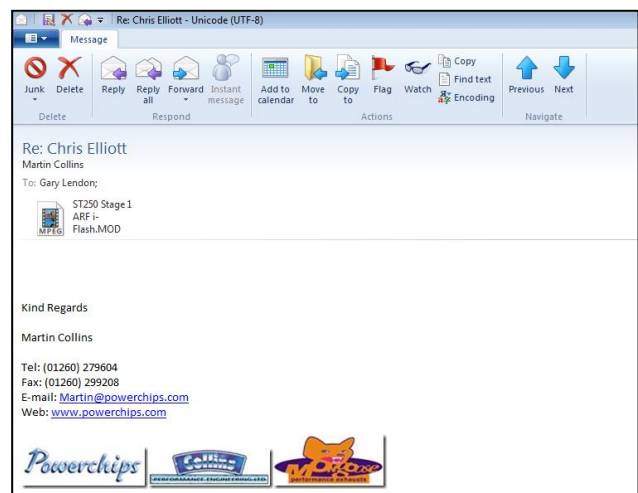
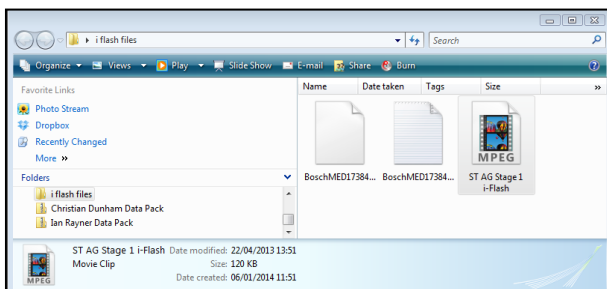


2.20 We will then send you your tuned/modified File back to via email

Save the file into your i-flash folder ready for use

Notes: The tuned/modified file we send you will appear as a MPEG file on your laptop

This file is encrypted to only work on your vehicle



Section 3 – Installing Software onto your Vehicle

3.1 Plug your i-flash cable into your laptop's USB Port and connect the OBD2 connector to your vehicle

Important Note: Before proceeding further

Please ensure the vehicles battery is fully charged

That the vehicles audio & climate system are switched off



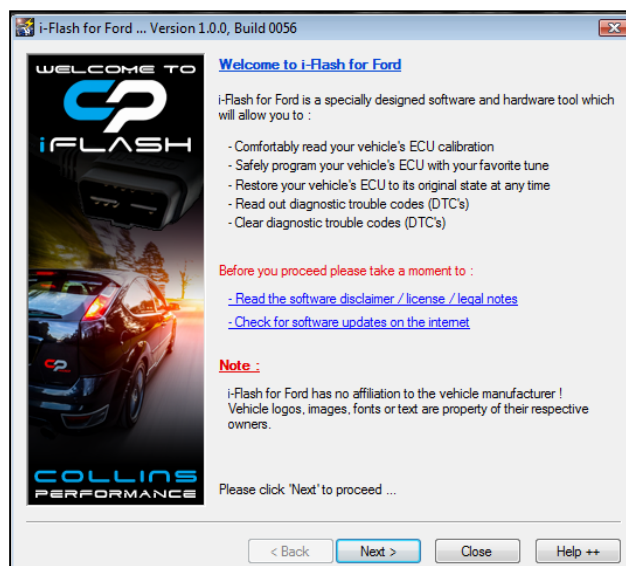
3.2 Switch on the ignition either by pressing the start button or turning the key to bring on the dash warning lights – DO NOT START THE ENGINE



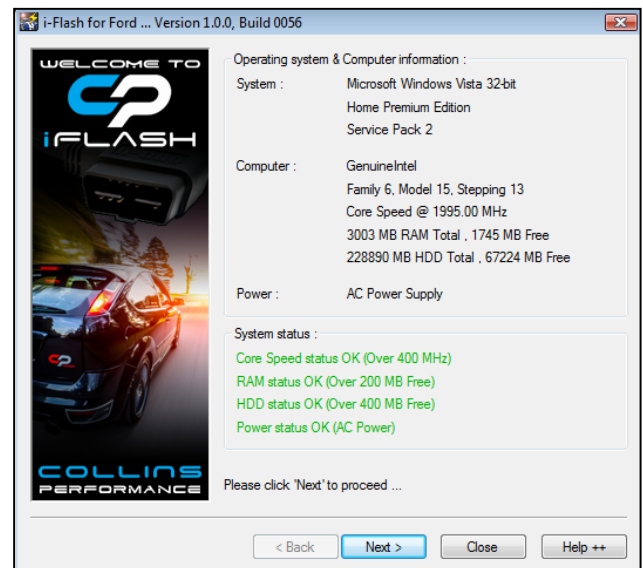
3.3 Double 'click' your CP i-flash desktop icon and open the i-flash Ford application



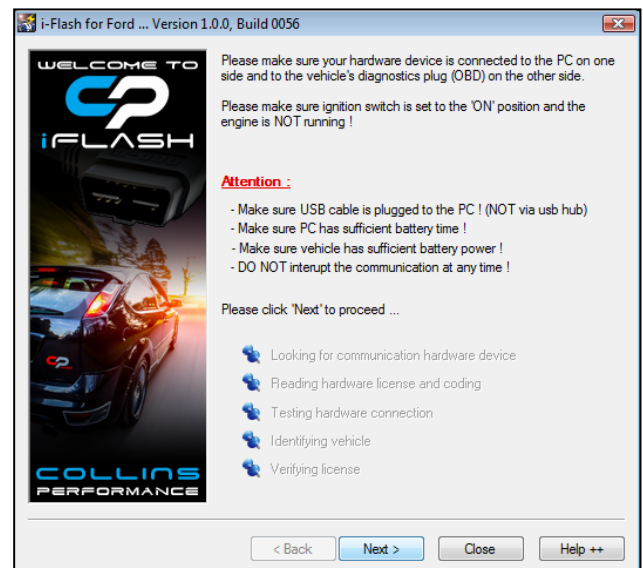
3.4 'Click' Next



3.5 'Click' Next



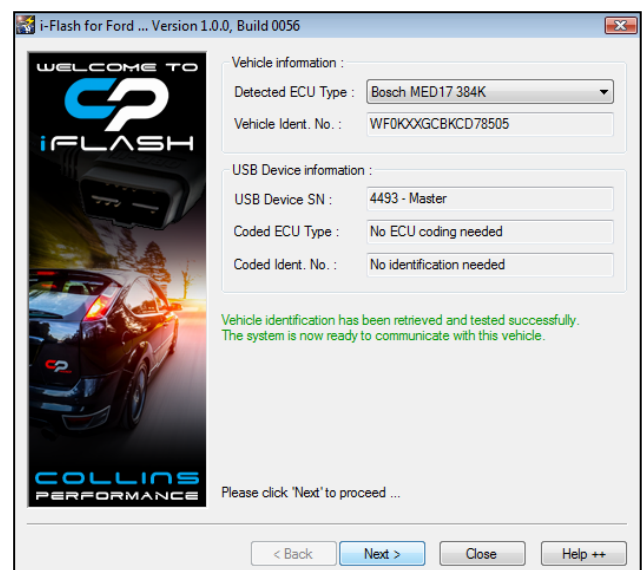
3.6 Please read the Attention warnings And then 'Click' Next



3.7 'Click' Next

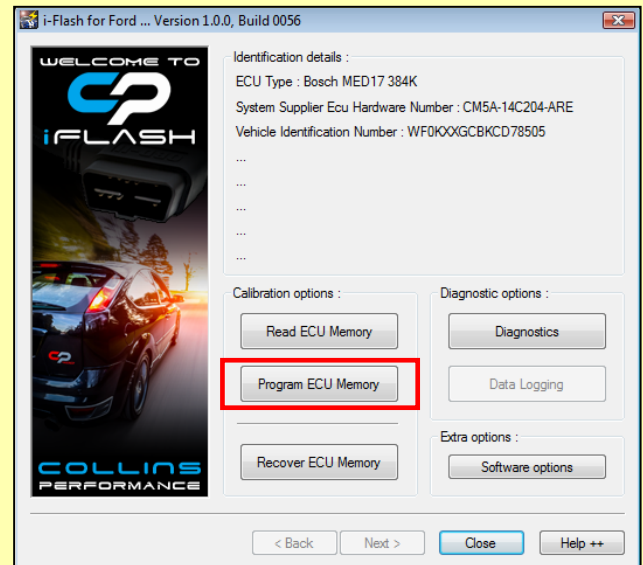
Note: FOCUS MK3 RS & FOCUS ST250 MK3.5 (2017>)
ONLY select 'Bosch MED17 768K' from the drop down
Menu as per the read process

FOCUS MK3 ST TDCi MK3.5 (2017>)
ONLY select 'Delphi DCM6.1' from the drop down
Menu as per the read process



Focus ST & RS Mk2 ONLY All other models go to point 3.11

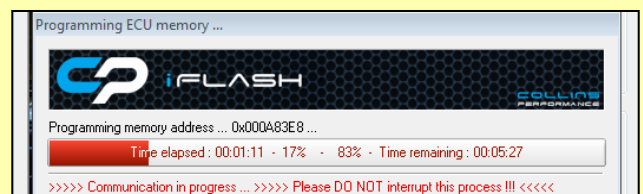
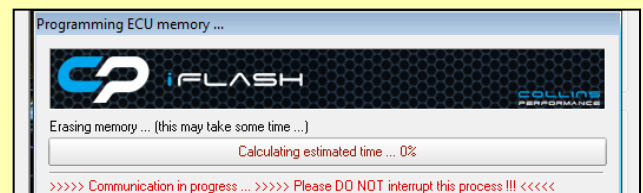
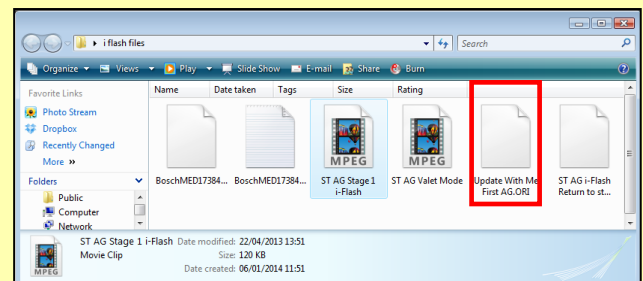
3.8 'Click' Program ECU Memory



Focus ST & RS Mk2 ONLY

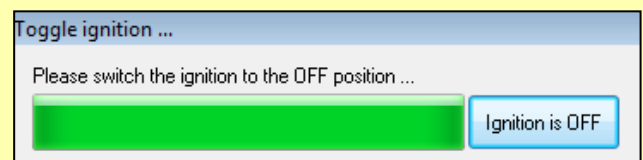
3.8 Select the 'update with me first AG' file

Note: During this process you will see warning Messages appear on the dash display such as "Engine system fault" etc



Focus ST & RS Mk2 ONLY

3.9 When prompted be message switch off the ignition And click 'Ignition is OFF'

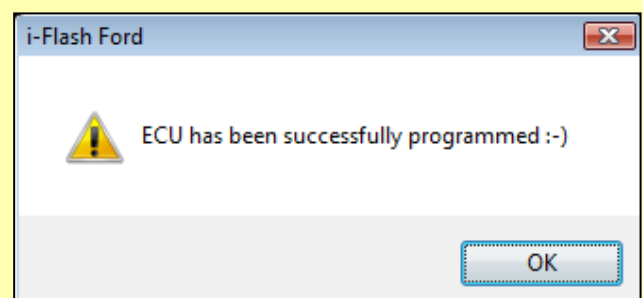


Focus ST & RS Mk2 ONLY

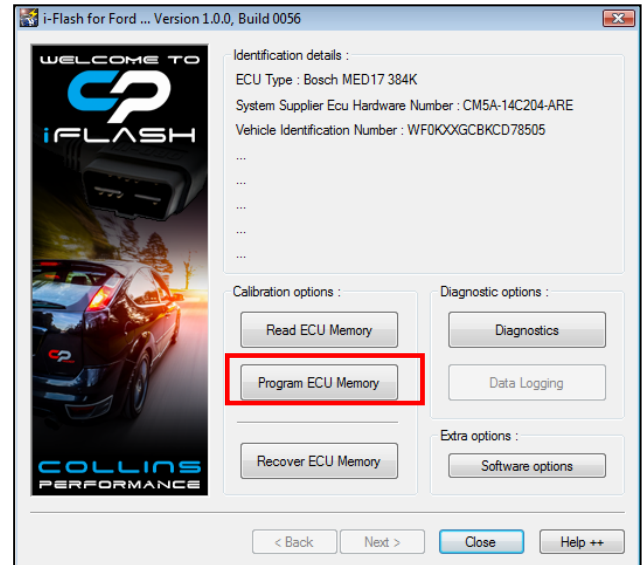
3.10 When you receive the 'ECU has been Successfully programmed' message start engine.

Check to ensure that there are no error messages Or warning lamps illuminated

Continue to point 3.11

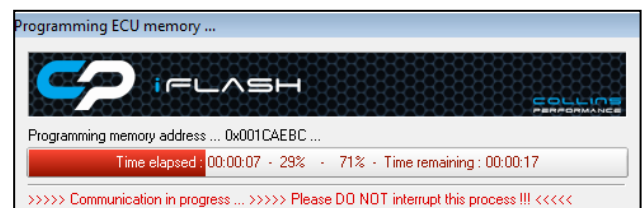
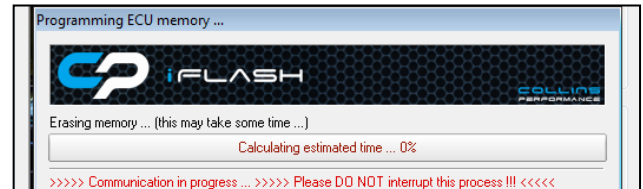
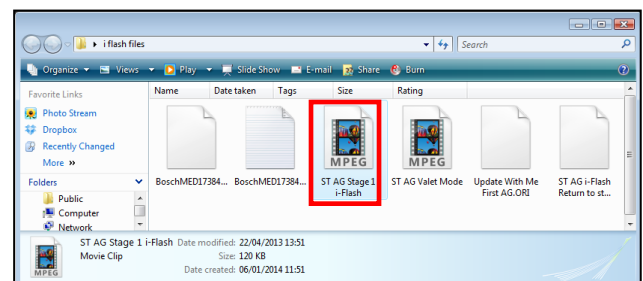


3.11 'Click' Program ECU Memory

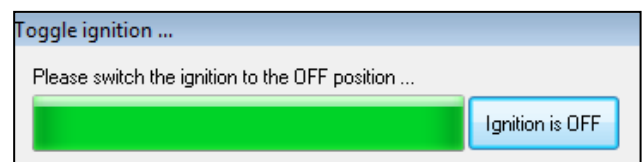


3.12 Select the file which you wish to install

Note: During this process you will see warning Messages appear on the dash display such as "Engine system fault" etc

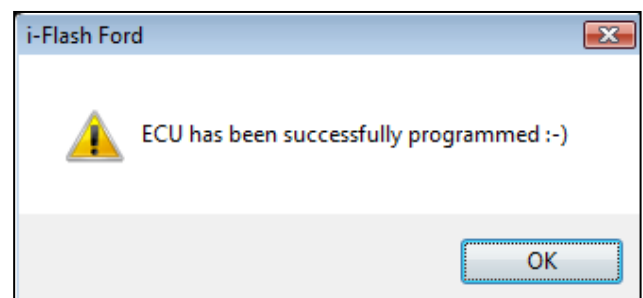


3.13 When prompted by the message switch off the Ignition and click 'Ignition is OFF'



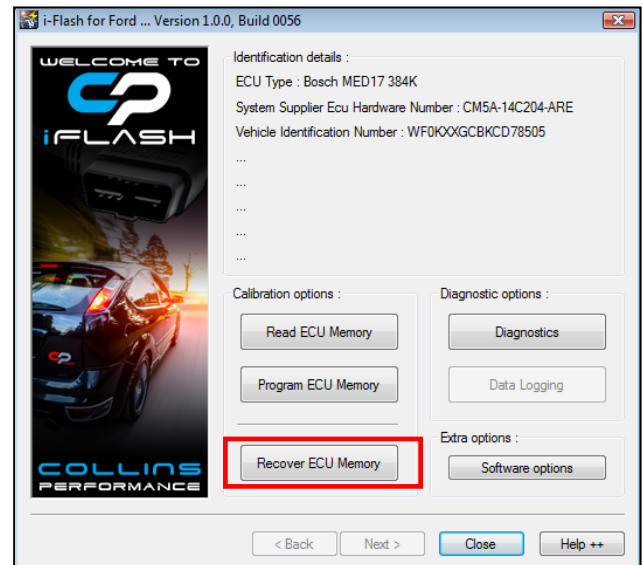
3.14 When you receive the 'ECU has been Successfully programmed' message start engine.

Check to ensure that there are no error messages
Or warning lamps illuminated



Section 4 – Reinstalling Original Software

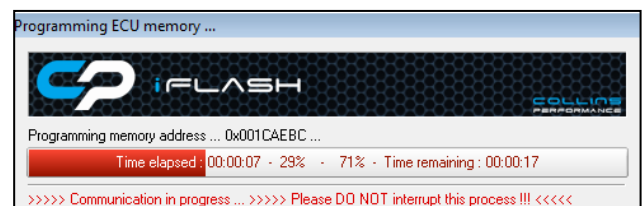
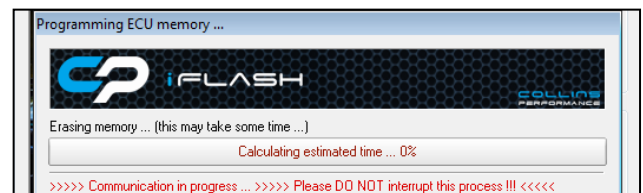
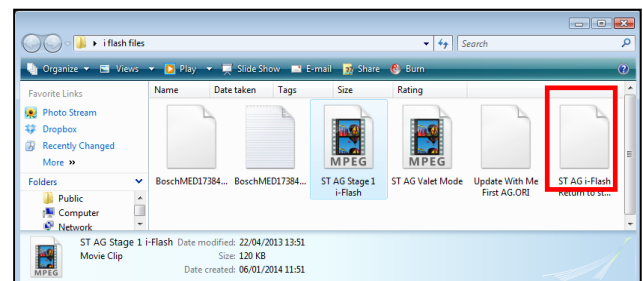
4.1 'Click' Program ECU Memory



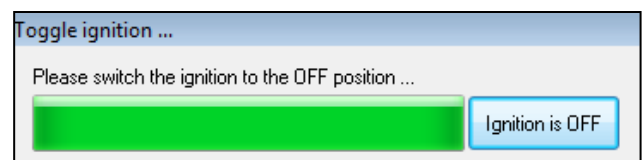
4.2 Select the file which you originally read out (Focus Mk2 ST/RS select the 'return to stock')

Follow the onscreen instructions

Note: During this process you will see warning Messages appear on the dash display such as "Engine system fault" etc

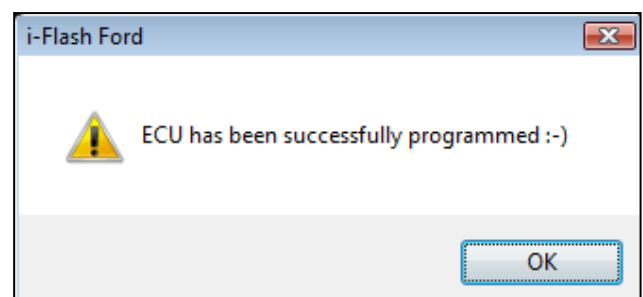


4.3 When prompted by the message switch off the Ignition and click 'Ignition is OFF'



4.4 When you receive the 'ECU has been Successfully programmed' message start engine.

Check to ensure that there are no error messages Or warning lamps illuminated



Section 5 – Firmware & Software updates

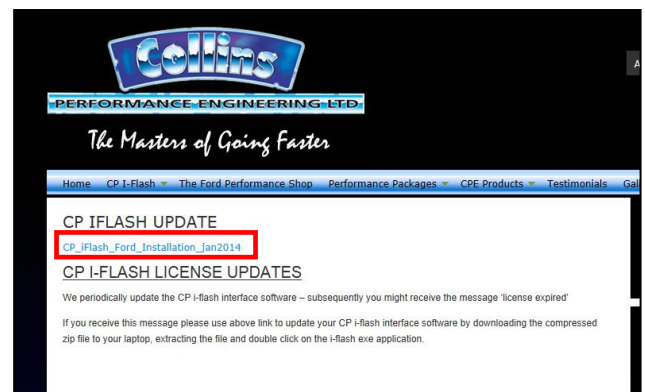
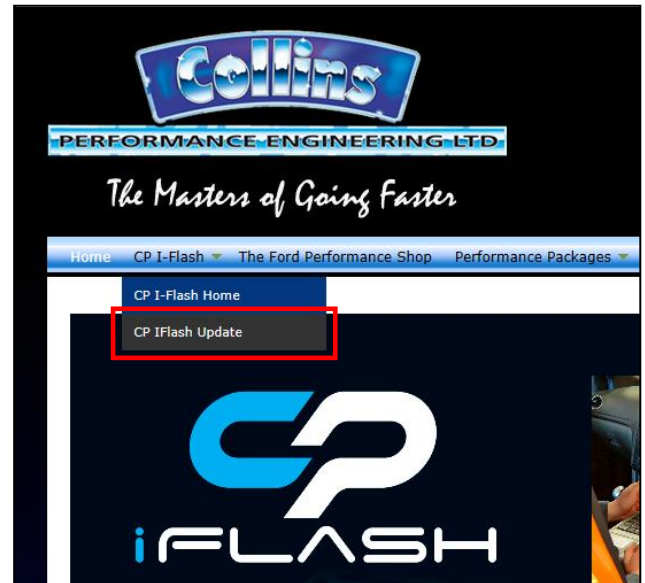
5.1 CP i-flash license updates

We periodically update the CP i-flash interface software subsequently you might receive the message

'License expired'

If you receive this message please use link below to update your CP i-flash interface software by downloading the compressed zip file to your laptop, extracting the file and double click on the i-flash exe application.

<https://www.collinsperformance.com/cp-iflash-update/>



Section 6 – Windows 8/10 64-bit Systems Driver Install

If you receive the message

'USB Device not Found' please follow the following procedure

6.1 Installing iflash drivers using Windows 8 64-bit systems

- 1) Uninstall the iflash software
- 2) follow the steps on this webpage to disable Driver Signature Enforcement
<http://collinsperformance.com/wp-content/uploads/2016/12/i-flash-Installing-Hardware-with-Unsigned-Drivers-in-Windows-8-101.pdf>
- 3) This will boot you up in a state where the drivers can be installed.
- 4) Unplug the iflash cable, install the iflash software, and accept the install of unsigned driver
- 5) Plug the cable in and try the software