

Installation Instructions

Engine Torque Mount Restrictor

Ford Fiesta 1.5 ST Ecoboost Model 2018>



Suitable for DIY installation

RECOMMENDED TOOLS

Trolley Jack & Axle Stands (or car ramp)
16mm & 15mm Socket & Ratchet
T30 Torx bit
Flat bladed screw driver
Torque wrench

Kit Part List

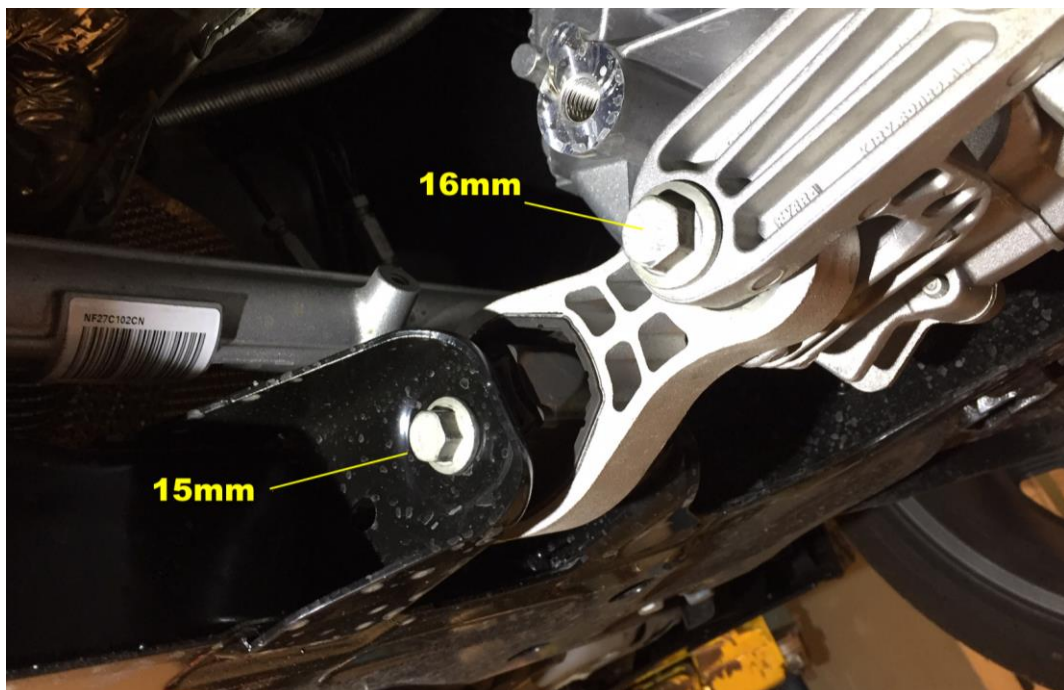
1 x Alloy Body
1 x Alloy Spacer
2 x 60mm Bushes
2 x 56mm Bushes
1 x 72mm Tube
1 x 39mm Tube
1 x 1.4mm spacer washer

REMOVAL

1. Place car on ramp or jack up car and support using axle stands
2. Remove the 6 x T30 torx screws and 2 x plastic clips retaining the engine under guard



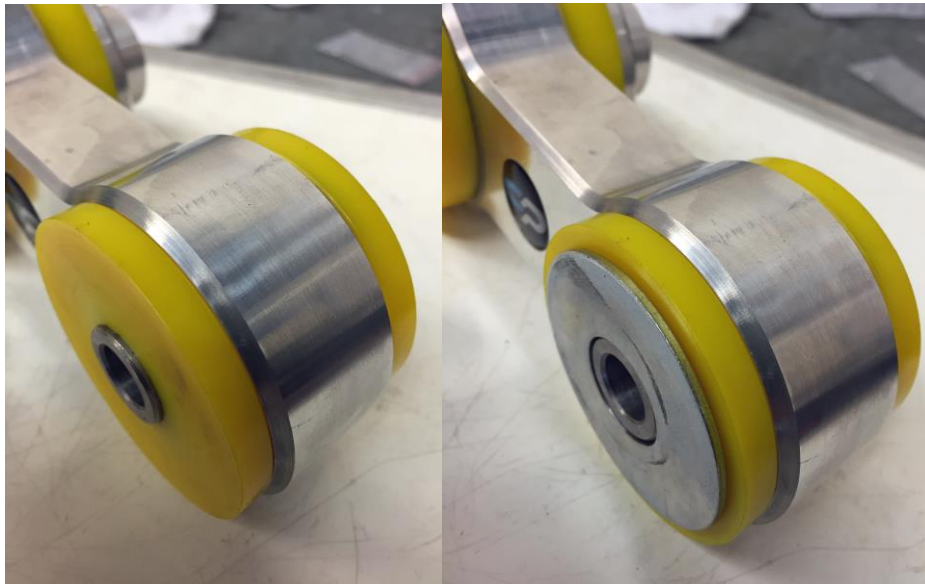
3. Remove the 1 x 16mm Bolt & 1 x 15mm Bolt retaining the existing mount (retain parts for reinstall later)



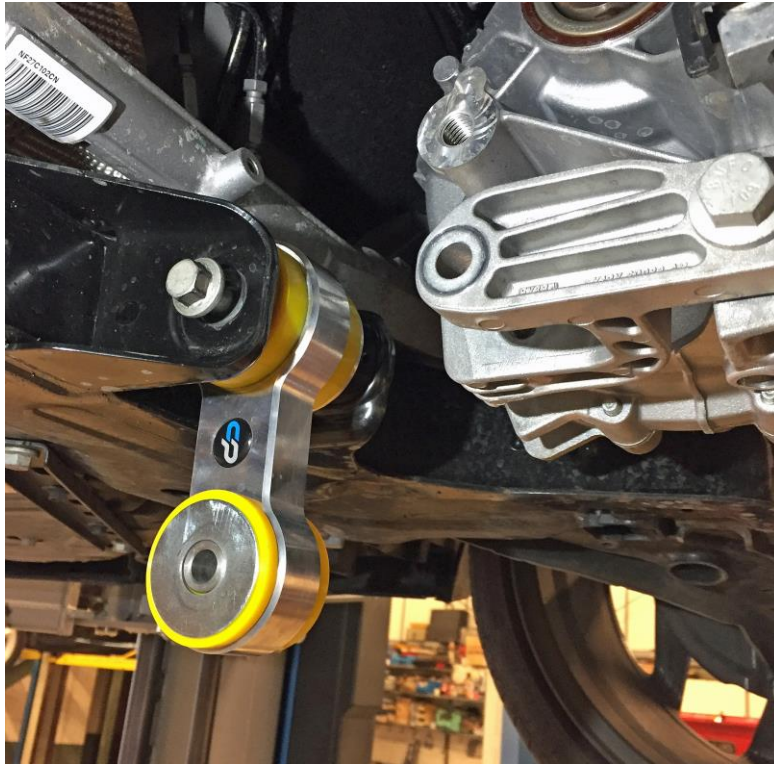
4. Remove the original mount



5. On the smaller end of the CP Mount protrude the bush just far enough to be locate the 1.4mm spacer washer - see photo below



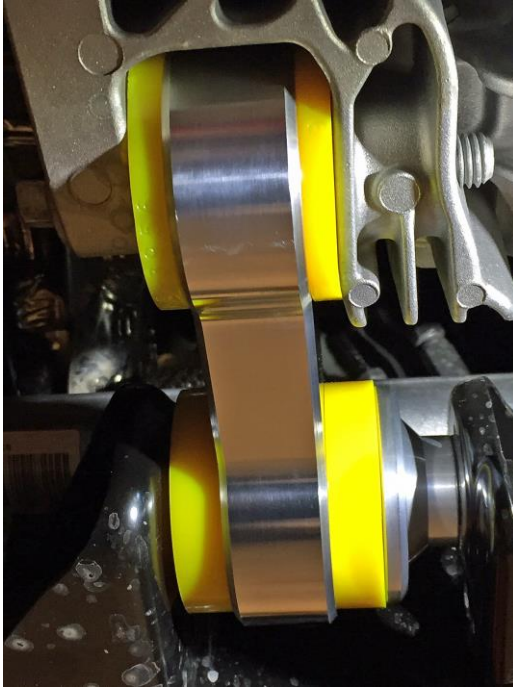
6. Install the CP Mount onto the subframe and loosely install the 15mm bolt



7. Swing the mount into the engine bracket ensuring the correct location of the spacer washer and loosely install the 16mm bolt
Note: this is a tight fit



8. The correctly oriented mount should look as pictured



9. Tighten the 15mm & 16mm Retaining bolts and tighten to 40 lb-ft

10. Reinstall the engine under guard using the 2 x plastic clips and the 6 x T30 torx screws



If you experience problems please call our customer service line at **01260 279604** for assistance.



Collins Performance
Engineering Ltd
Tel 01260 279604
Fax 01260 299208
Tel: M 07725 618 835

E-mail: gary@collinsperformance.com

Director: Martin Collins

VAT No: 634 1678 35